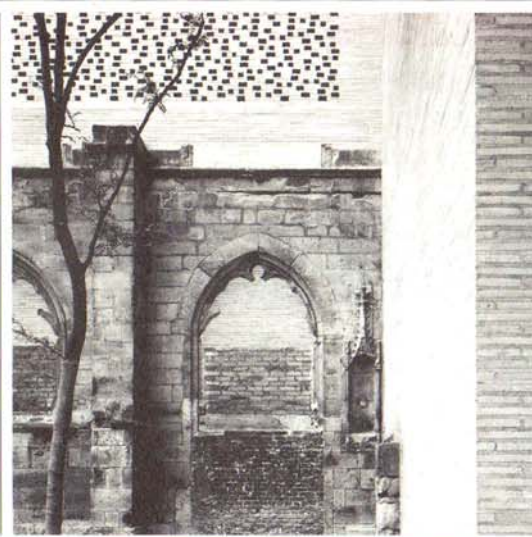


Hundreds of jobs on bd4jobs.co.uk and inside

"I want to drag British architects out in the street and shoot them"

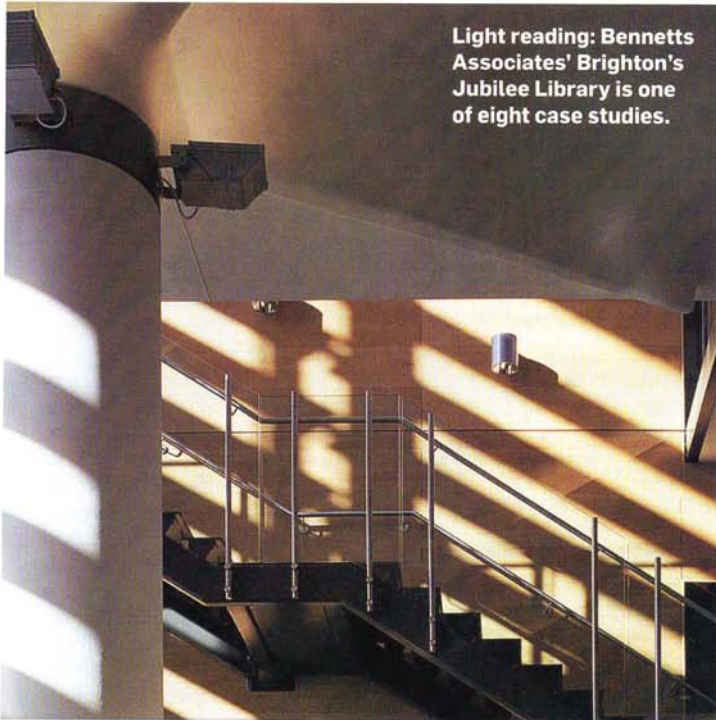


Cologne again naturally
Zumthor's art museum for the city has taken 10 years, but is well worth the wait **P.10**

Down and dirty
How to deal with offensive banter in the office **P.20**



Light reading: Bennetts Associates' Brighton's Jubilee Library is one of eight case studies.



I WISH I'D DONE THAT

CHRIS JACKSON
Barcelona Pavilion, Spain



A pavilion, by definition, is a place of pleasure and relaxation. This is certainly true of Mies van der

Rohe's masterpiece, the Barcelona Pavilion. A stunning example of modern architecture, albeit conceived almost 79 years ago, its beauty lies in the purity of design, the ensemble of luxurious natural materials

and the way it harnesses the power of natural light.

The pavilion was designed as a ceremonial hall in which the German authorities would receive King Alfonso XIII as part of the opening ceremony of the 1929 Barcelona International Exhibition. Designed as a temporary structure, it was disassembled in 1930, and then rebuilt in 1983-86 on the original site.

The building is open plan and minimal in design, composed of horizontal planes that appear to float and divided by vertical planes of marble and glass that seem almost free-standing. The juxtaposition of natural marble and man-made materials means it is not only a great feat of design, but also a masterclass in defining space through the medium of light.

Due to high specular reflectance, the solid marble walls often appear transparent, while the shallow pools merge the building with its natural surroundings.

At night, a large light box that forms part of the external glazing lights the space. Formed of two layers of milky-white glass, with fluorescent

lighting between, it produces a mystical luminous wall. Mies's creation can be described as a harmonious play of light, integrating all forms of light propagation — reflection, transmission, diffusion, emission and refraction.

■ *Chris Jackson is a lecturer and research fellow at The Bartlett, UCL*



The Barcelona Pavilion shows how to define space through light.